

NATURAL SCIENCE (UNIT 1)

“Living organisms” Review Activities

Activity 1: The Cellular Level

Instructions: Fill in the gaps with the correct scientific terms.

1. All living things are made of _____, which are the smallest units of life.
2. Organisms like bacteria, made of only one cell, are called _____.
3. Animals and plants are _____ because they consist of millions of cells.
4. The _____ is the "skin" of the cell that controls what enters and exits.
5. The jelly-like substance where organelles are found is the _____.
6. The _____ contains DNA and acts as the control center of the cell.
7. Cells without a defined nucleus are called _____ cells.
8. Cells that have a nucleus and complex organelles are _____ cells.
9. _____ are small structures in the cytoplasm that perform specific jobs.
10. The set of instructions for the cell's development is called _____ material.
11. Plant cells have a rigid _____ outside the membrane for extra support.
12. Photosynthesis happens in the _____ of a plant cell.

13. Large sacs that store water and nutrients in cells are called _____.

14. Human cells are a type of _____ cell because they have a nucleus.

15. Because cells are so small, they are considered _____ structures.

Activity 2: Human Tissues

Instructions: Identify the tissue type (Epithelial, Muscular, Connective, or Nervous) for each description or location.

1. Covers the outside of the body (skin): _____

2. Contracts to allow the heart to beat: _____

3. Found in the brain and spinal cord: _____

4. Connects muscles to bones (tendons): _____

5. Lines the inside of the stomach: _____

6. Made of elongated cells called fibers: _____

7. Forms the skeleton (bones): _____

8. Sends electrical signals throughout the body: _____

9. Is responsible for absorbing nutrients in the intestines: _____

10. Fat tissue that stores energy and protects organs: _____

11. Allows us to move our arms and legs: _____

12. Reacts to stimuli from the environment: _____

13. Protects the body from germs and injury: _____

14. Blood is considered a type of specialized _____ tissue.

15. Coordinates and controls body activities: _____

Activity 3: Levels of Organization & Systems

Instructions: Answer the following based on how the body is organized.

1. List the 4 levels of organization from simplest to most complex: _____

2. A group of similar cells working together forms a _____.
3. Different tissues working together to perform a task form an _____.
4. A group of organs that work together for a major function is a _____.
5. Which system breaks down food into nutrients? _____
6. Which system carries oxygen and nutrients to the cells? _____
7. Which system is responsible for gas exchange (O₂ and CO₂)? _____
8. Which system removes waste products from the blood? _____
9. Which system produces offspring? _____
10. Name an organ that belongs to the Digestive System: _____.
11. Name an organ that belongs to the Respiratory System: _____.
12. Which system includes the brain and nerves? _____
13. Name a plant organ mentioned in your notes: _____.
14. What level of organization is the heart? _____.
15. What level of organization is the bicep muscle? _____.

Activity 4: Plant vs. Animal Life

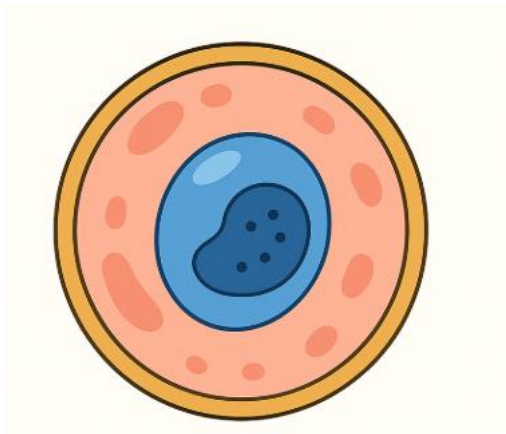
Instructions: Write TRUE or FALSE. Correct the false statements.

1. ____ Plant cells have a cell wall, but animal cells do not.
2. ____ Both plants and animals are multicellular organisms.
3. ____ Animals produce their own food through photosynthesis.
4. ____ The stem and roots are examples of plant organs.
5. ____ Animal cells usually have one very large central vacuole.
6. ____ Tissues are more complex than organs.
7. ____ Chloroplasts are found in both animal and plant cells.
8. ____ The nervous system is found in both plants and animals.
9. ____ Connective tissue is only found in animals.
10. ____ Every cell in a multicellular organism performs the exact same job.
11. ____ Human beings have more than 100 trillion cells.
12. ____ Plants use their sense organs to react to the environment.
13. ____ The nucleus is the largest organelle in most eukaryotic cells.
14. ____ Muscles are part of the Muscular system.
15. ____ All cells come from other pre-existing cells.

Activity 5: Comparing Animal and Plant Cells

Instructions: Look at the two diagrams below. Identify the parts labeled with numbers by matching them with the correct vocabulary term from the box. DRAW ITS LINES.

Cell Membrane — Cell Wall — ANIMAL CELL— Cytoplasm — PLANT CELL -
Nucleus — Genetic Material — Chloroplasts



Activity 6: Now practise the Writing task explaining important things in an organised way.